

### Routine Water Quality Monitoring for CMP V - May 2013

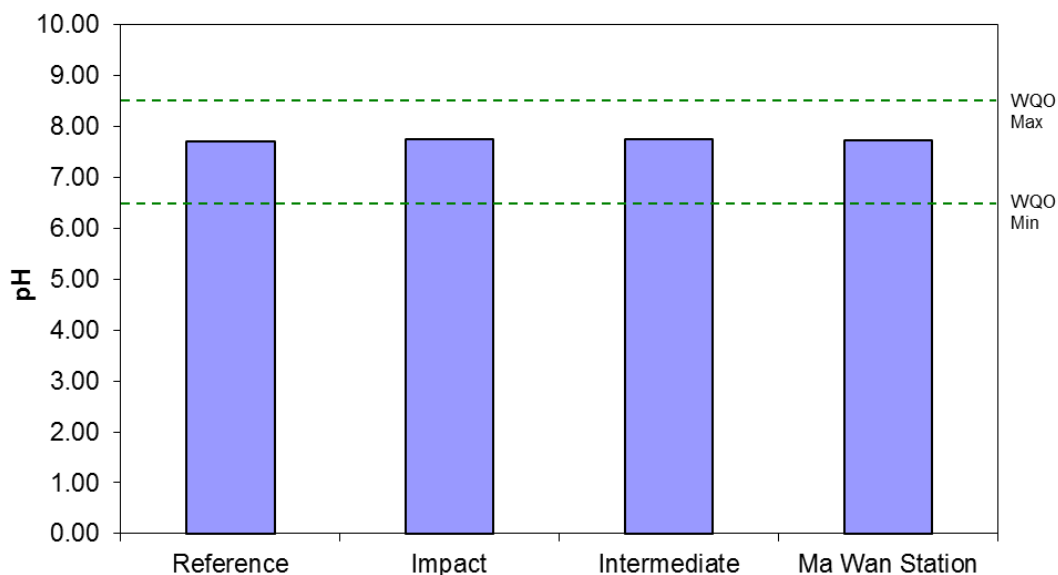


Figure 1: Level of pH (mean + SD) recorded during Routine Water Quality Monitoring for disposal operations at CMP Va in May 2013.

### Routine Water Quality Monitoring for CMP V - May 2013

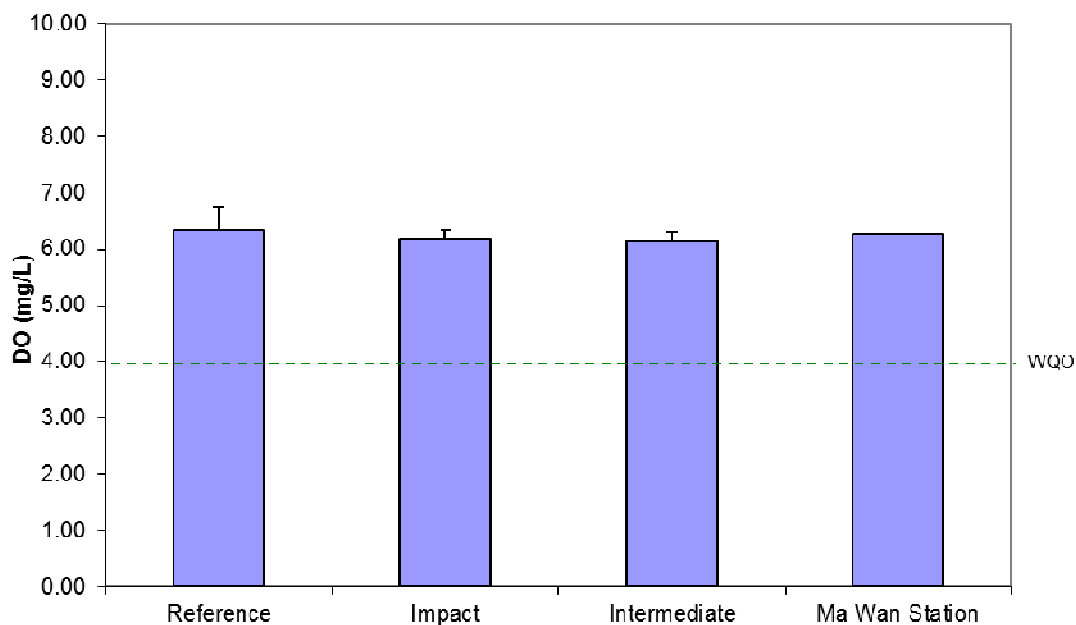


Figure 2: Concentration of Dissolved Oxygen (mg/L; mean + SD) recorded during Routine Water Quality Monitoring for disposal operations at CMP Va in May 2013.

### Routine Water Quality Monitoring for CMP V - May 2013

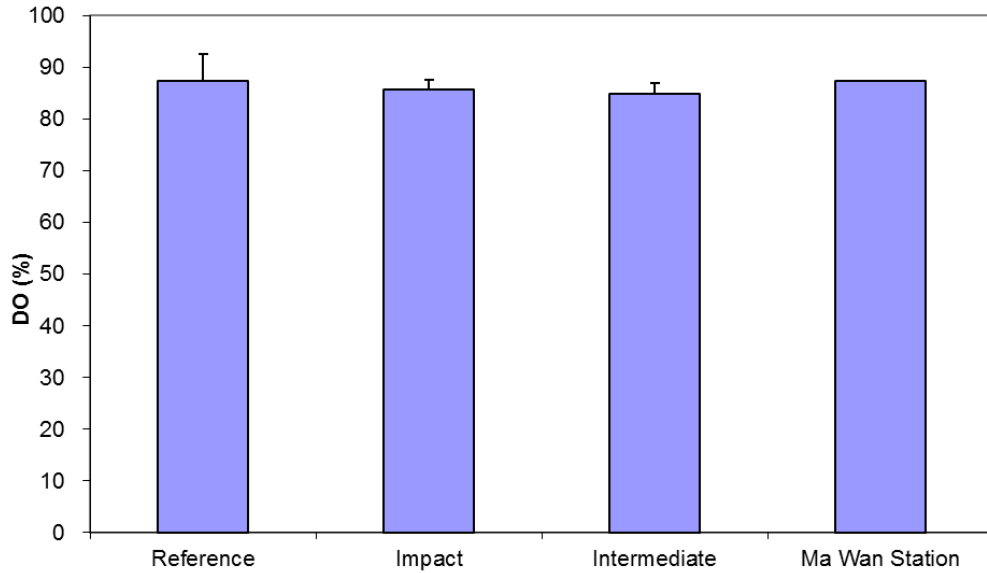


Figure 3: Level of Dissolved Oxygen (% saturation; mean + SD) recorded during Routine Water Quality Monitoring for disposal operations at CMP Va in May 2013.

### Routine Water Quality Monitoring for CMP V - May 2013

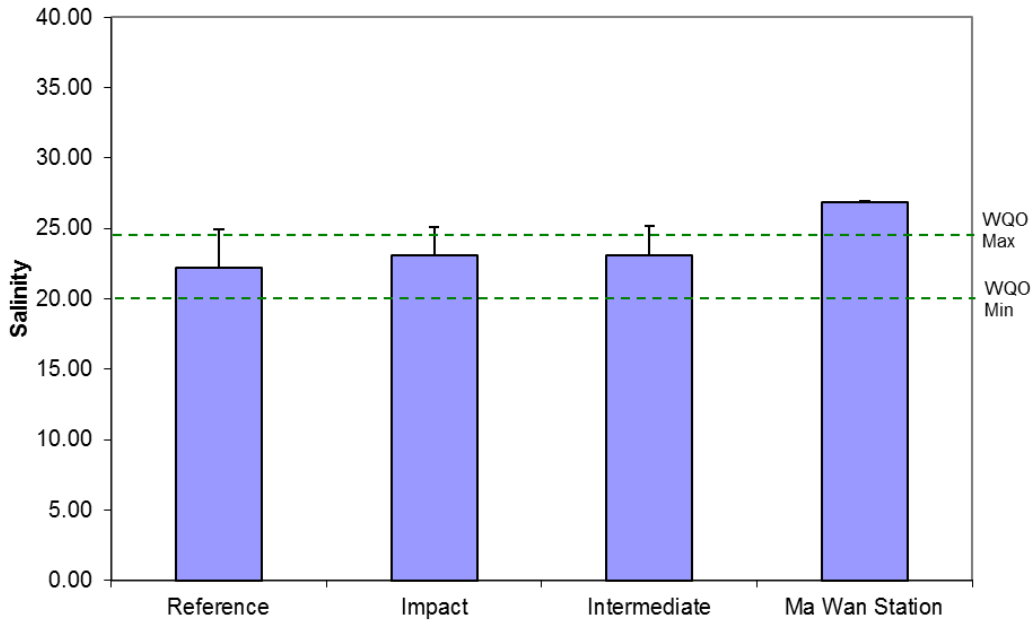


Figure 4: Level of Salinity (mean + SD) recorded during Routine Water Quality Monitoring for disposal operations at CMP Va in May 2013.

### Routine Water Quality Monitoring for CMP V - May 2013

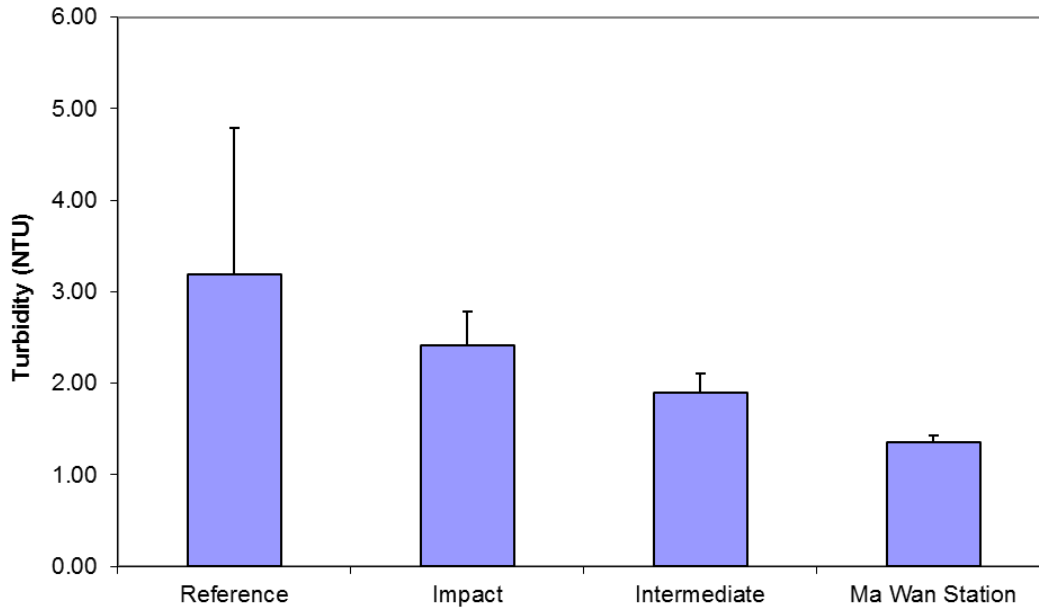


Figure 5: Level of Turbidity (NTU; mean + SD) recorded during Routine Water Quality Monitoring for disposal operations at CMP Va in May 2013.

### Routine Water Quality Monitoring Results for Metals May 2013

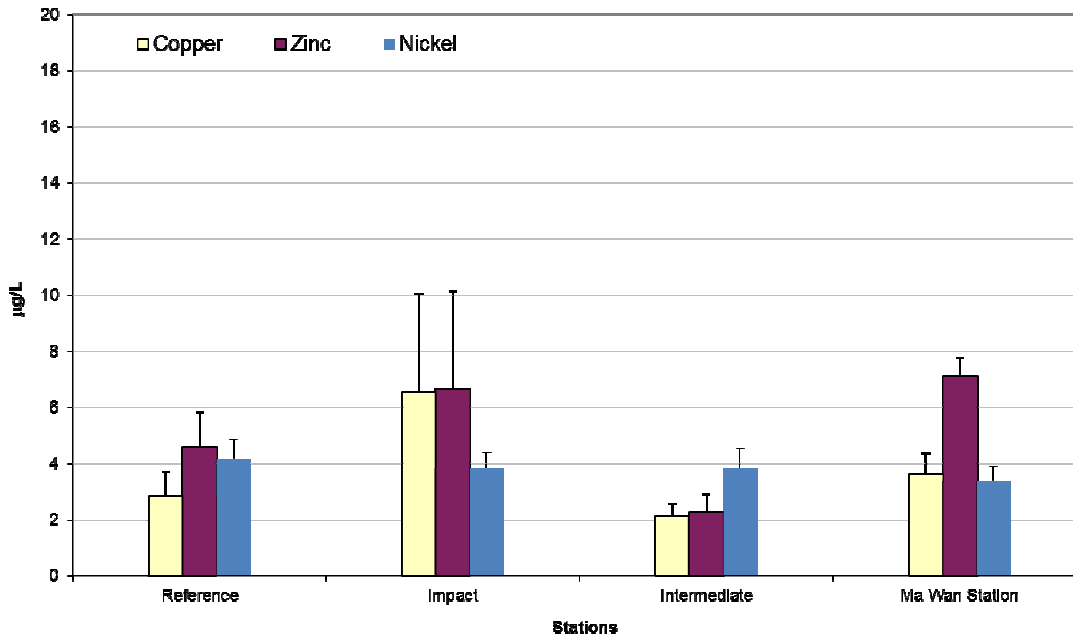


Figure 6: Concentration of Copper, Zinc and Nickel (mean + SD) in water samples collected from Routine Water Quality Monitoring for disposal operations at CMP Va in May 2013.

**Routine Water Quality Monitoring Results for Biochemical Oxygen Demand (BOD<sub>5</sub>)  
May 2013**

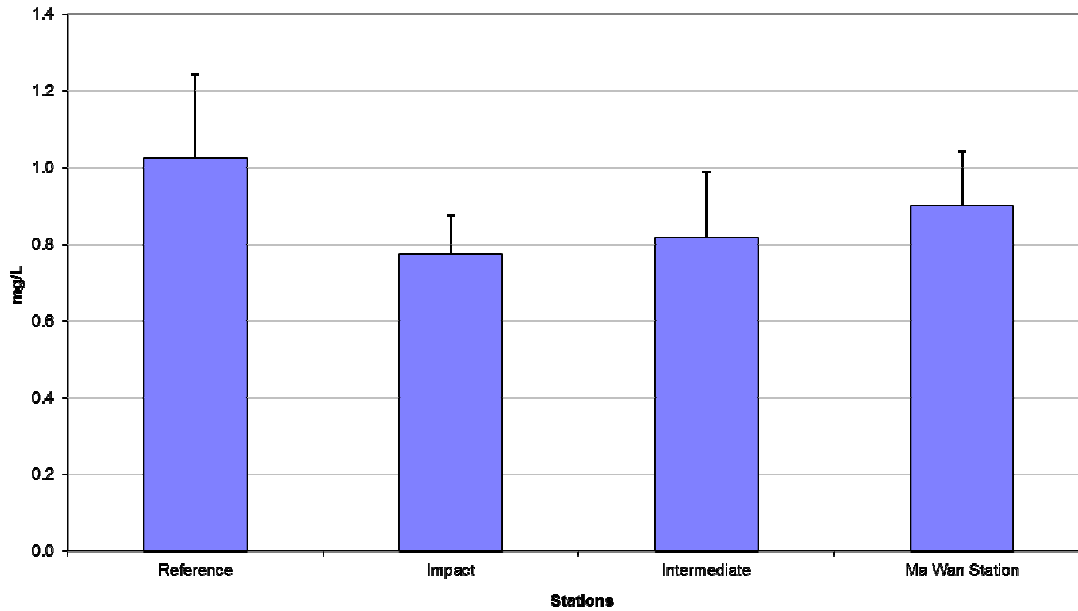


Figure 7: Level of Biochemical Oxygen Demand (BOD<sub>5</sub>; mean + SD) in water samples collected from Routine Water Quality Monitoring for disposal operations at CMP Va in May 2013.

**Routine Water Quality Monitoring Results for Nutrients  
May 2013**

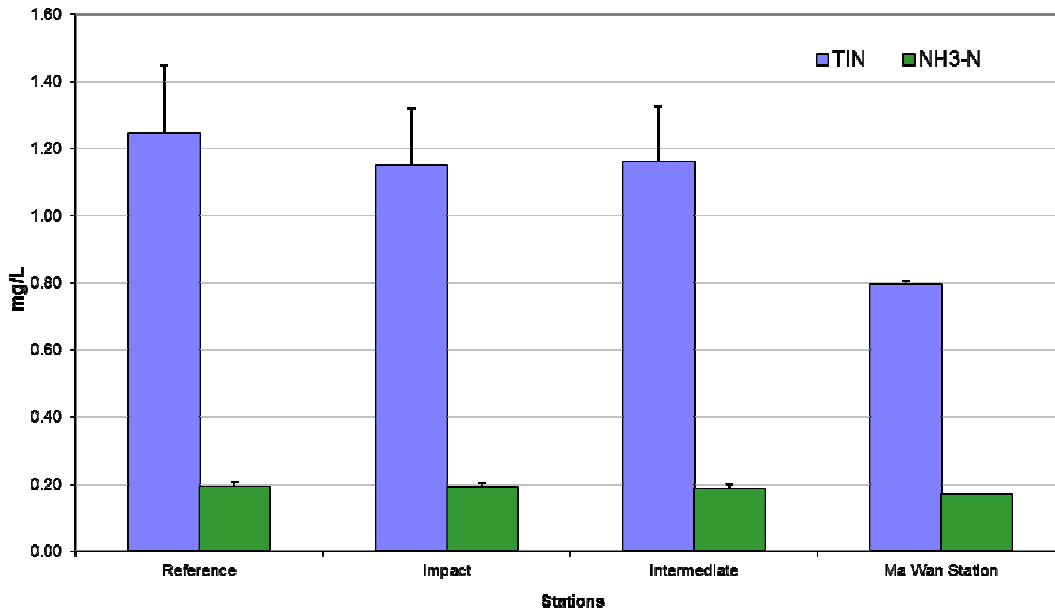


Figure 8: Concentration of Total Inorganic Nitrogen and NH<sub>3</sub>-N (mean + SD) in water samples collected from Routine Water Quality Monitoring for disposal operations at CMP Va in May 2013.

**Routine Water Quality Monitoring for Suspended Solids  
May 2013**

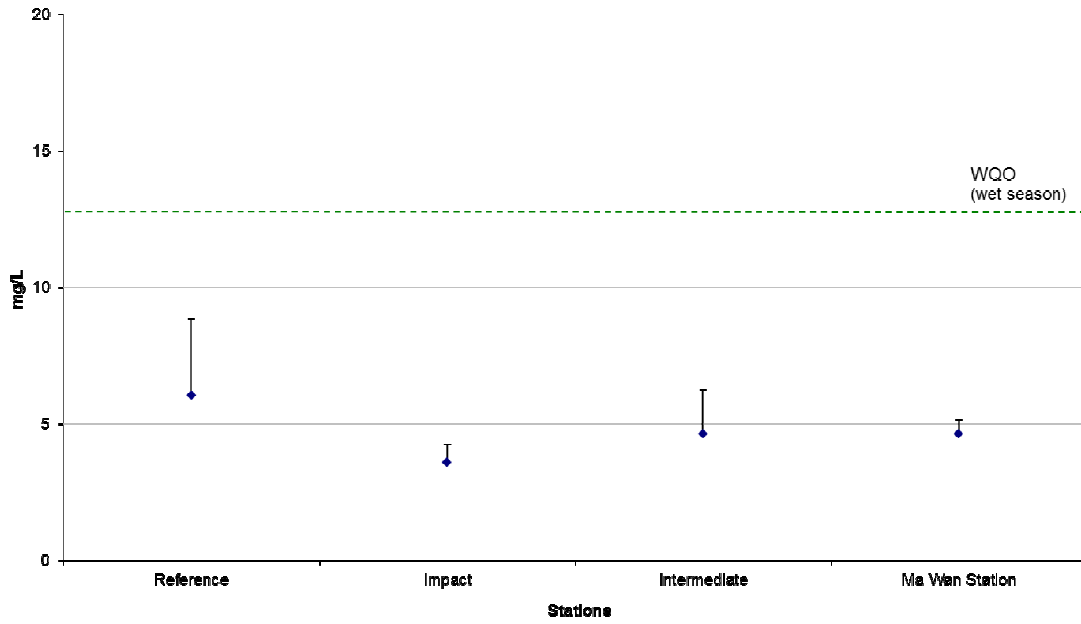


Figure 9: Concentration of Suspended Solids (mean + SD) in water samples collected from Routine Water Quality Monitoring for disposal operations at CMP Va in May 2013.