

Annex B

## Monitoring Results

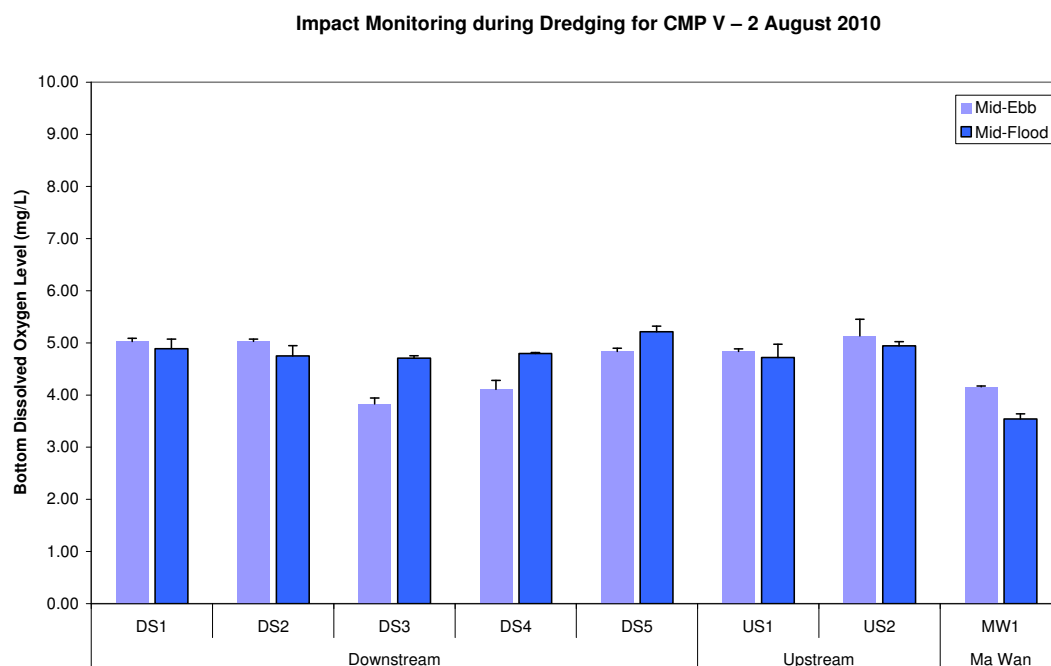


Figure 1: Bottom DO level (mean + SD) at Downstream (DS1, DS2, DS3, DS4 and DS5), Upstream (US1 and US2) and Ma Wan (MW1) stations during Impact Monitoring for Dredging at CMP V on 2 August 2010.

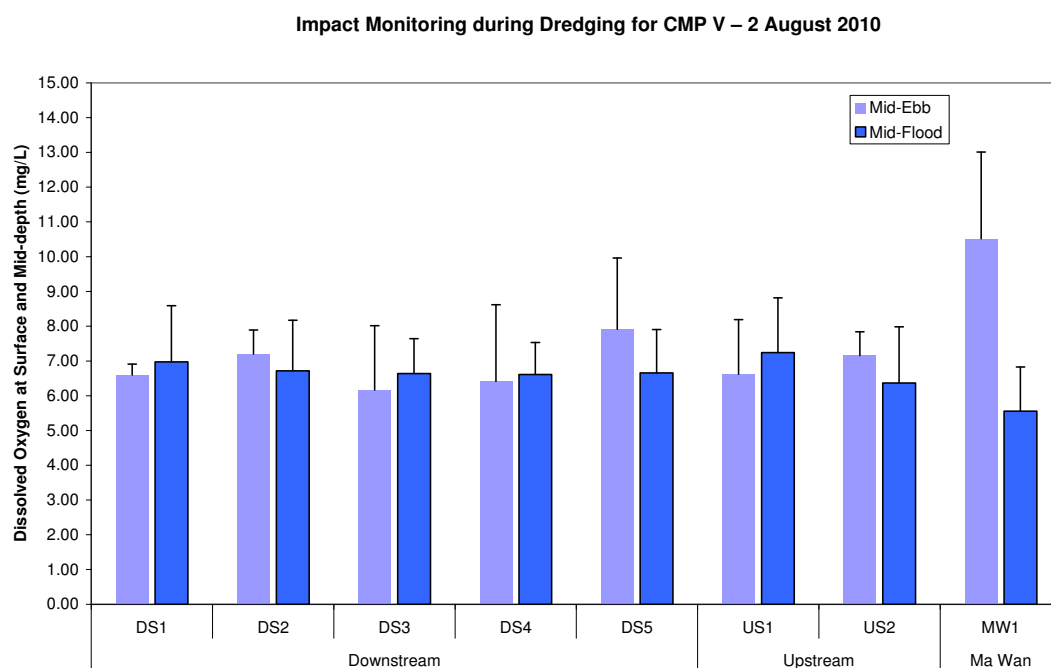
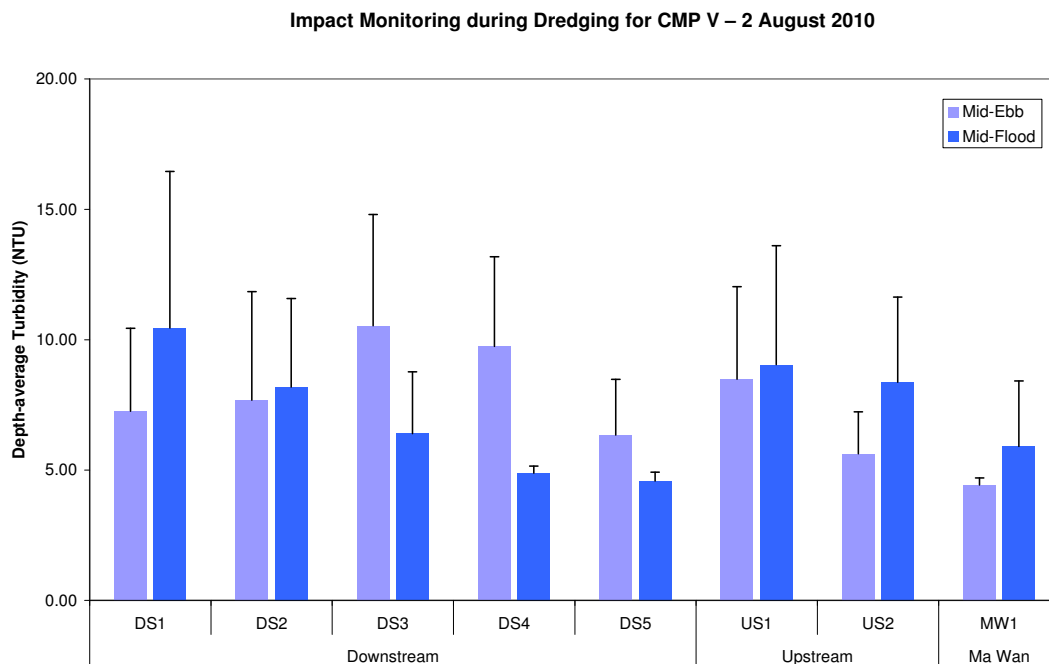
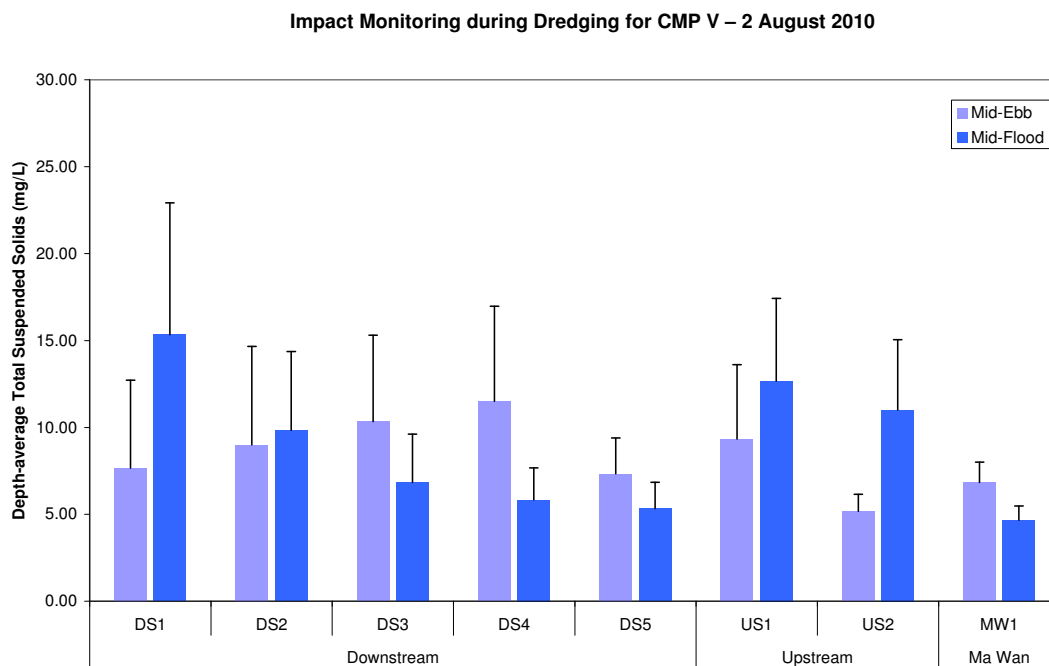


Figure 2: DO level at Surface and Mid-depth (mean + SD) at Downstream (DS1, DS2, DS3, DS4 and DS5), Upstream (US1 and US2) and Ma Wan (MW1) stations during Impact Monitoring for Dredging at CMP V on 2 August 2010.



**Figure 3:** Depth-average Turbidity (mean + SD) at Downstream (DS1, DS2, DS3, DS4 and DS5), Upstream (US1 and US2) and Ma Wan (MW1) stations during Impact Monitoring for Dredging at CMP V on 2 August 2010.



**Figure 4:** Depth-average TSS (mean + SD) at Downstream (DS1, DS2, DS3, DS4 and DS5), Upstream (US1 and US2) and Ma Wan (MW1) stations during Impact Monitoring for Dredging at CMP V on 2 August 2010.

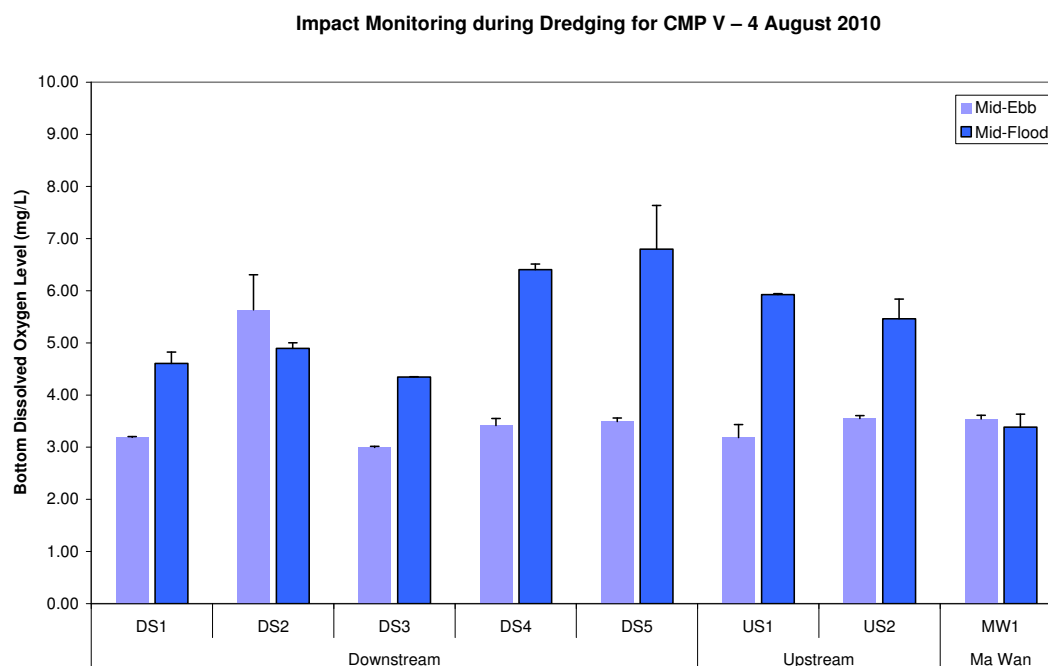


Figure 5: Bottom DO level (mean + SD) at Downstream (DS1, DS2, DS3, DS4 and DS5), Upstream (US1 and US2) and Ma Wan (MW1) stations during Impact Monitoring for Dredging at CMP V on 4 August 2010.

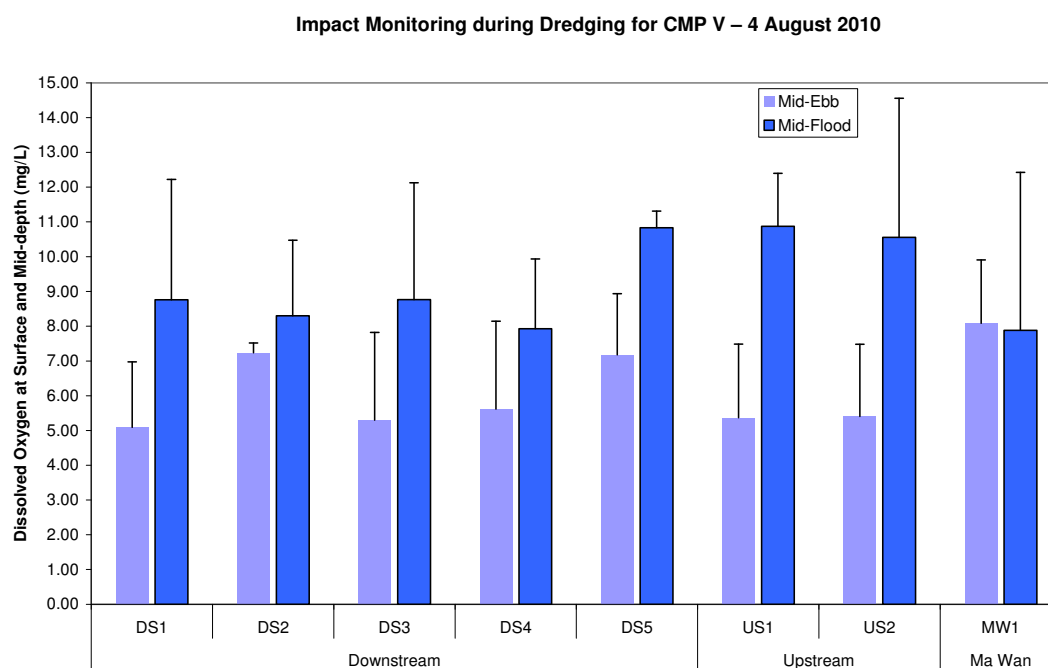


Figure 6: DO level at Surface and Mid-depth (mean + SD) at Downstream (DS1, DS2, DS3, DS4 and DS5), Upstream (US1 and US2) and Ma Wan (MW1) stations during Impact Monitoring for Dredging at CMP V on 4 August 2010.

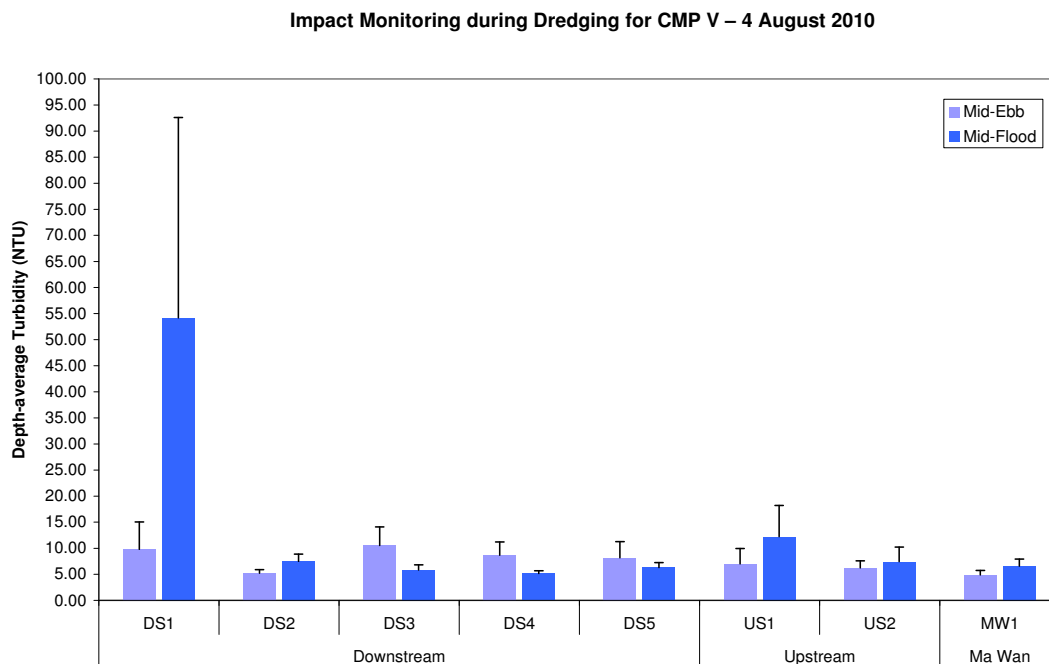


Figure 7: Depth-average Turbidity (mean + SD) at Downstream (DS1, DS2, DS3, DS4 and DS5), Upstream (US1 and US2) and Ma Wan (MW1) stations during Impact Monitoring for Dredging at CMP V on 4 August 2010.

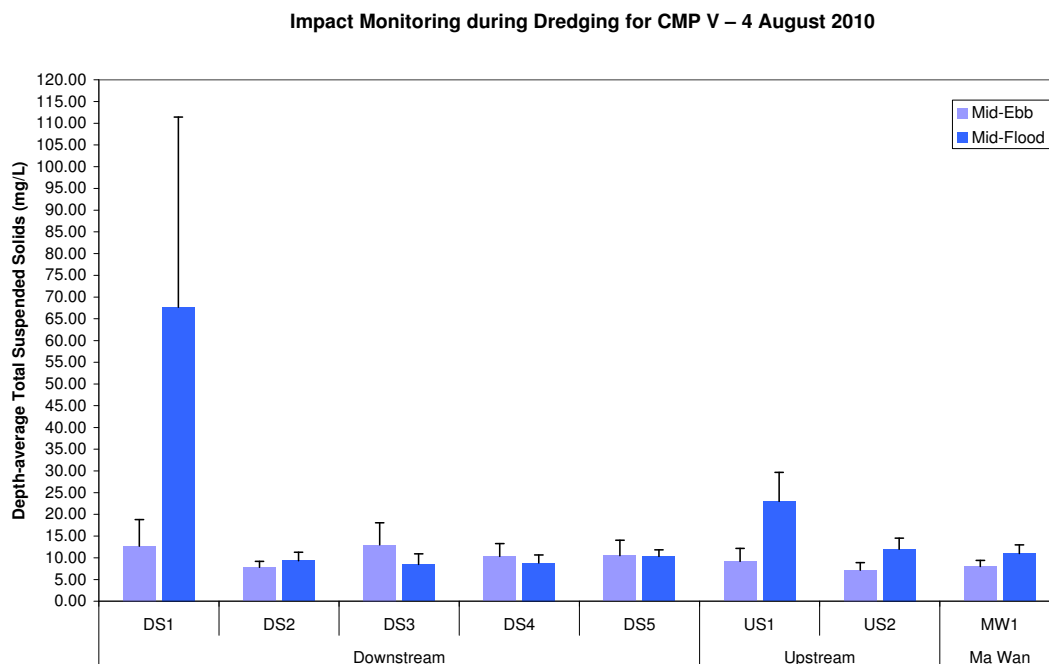


Figure 8: Depth-average TSS (mean + SD) at Downstream (DS1, DS2, DS3, DS4 and DS5), Upstream (US1 and US2) and Ma Wan (MW1) stations during Impact Monitoring for Dredging at CMP V on 4 August 2010.

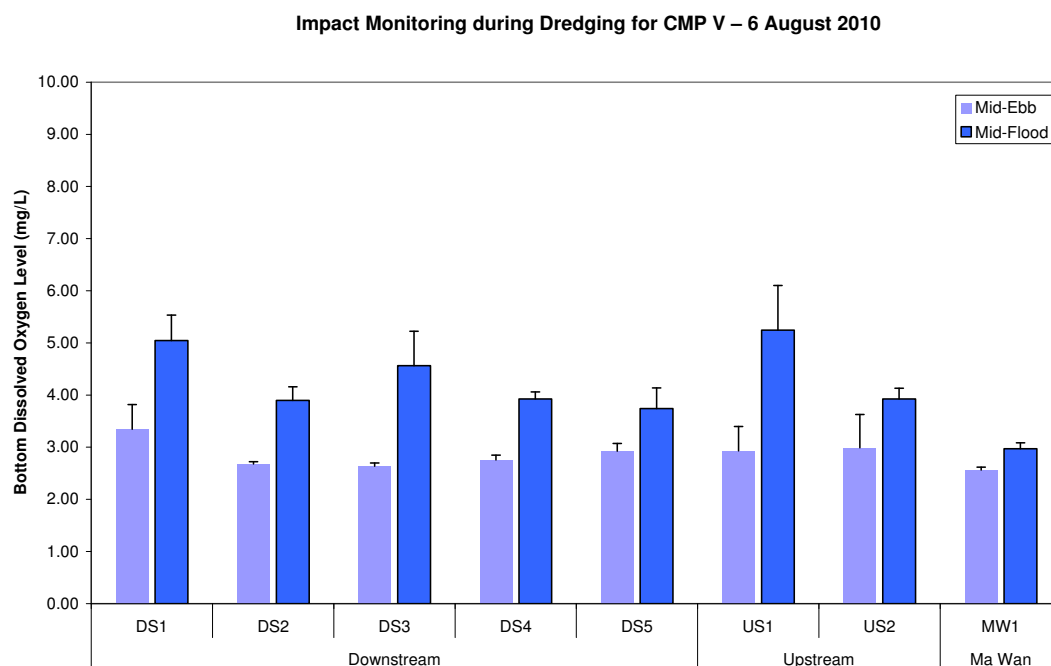


Figure 9: Bottom DO level (mean + SD) at Downstream (DS1, DS2, DS3, DS4 and DS5), Upstream (US1 and US2) and Ma Wan (MW1) stations during Impact Monitoring for Dredging at CMP V on 6 August 2010.

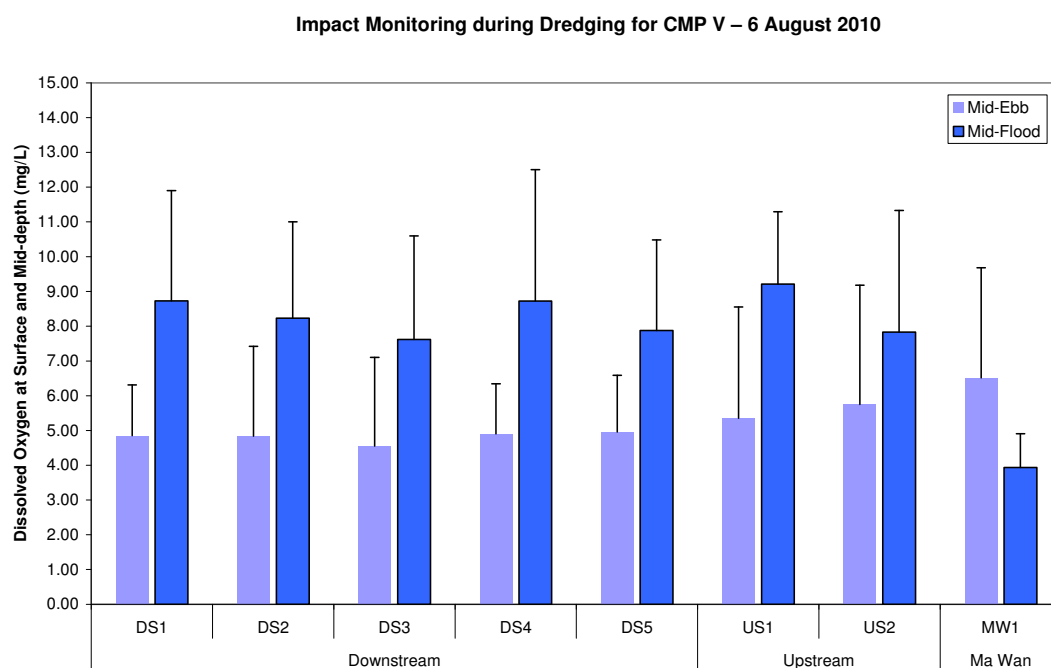
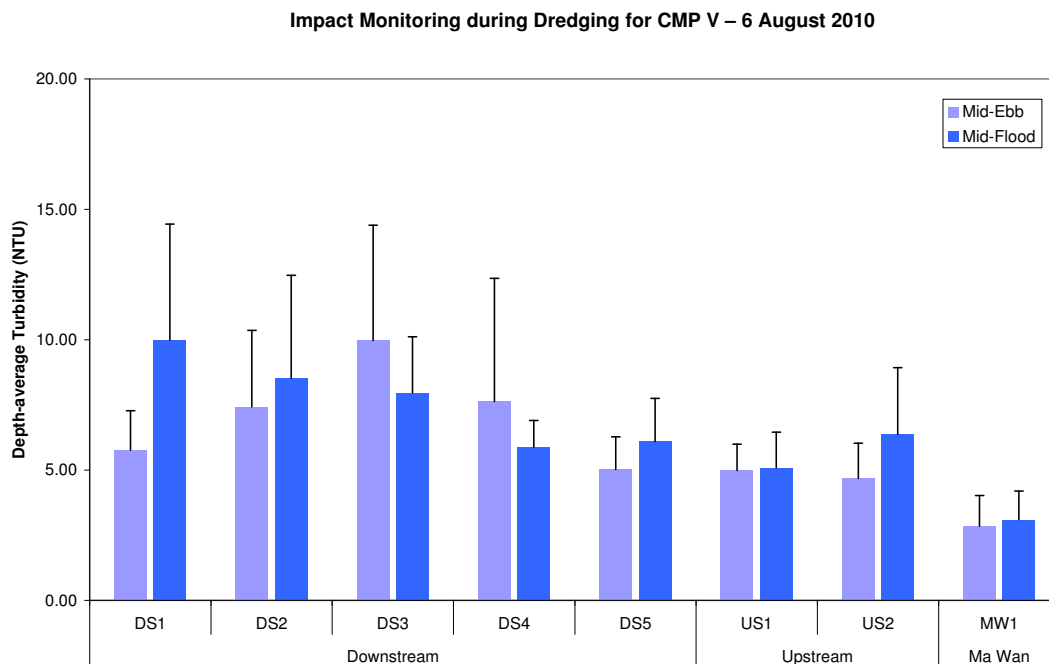
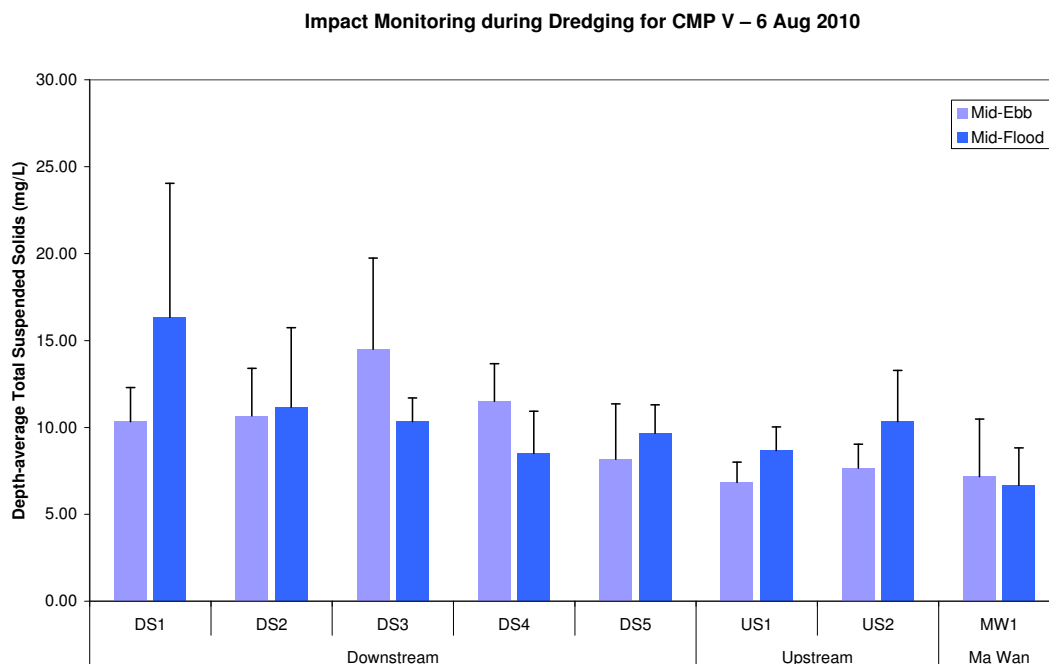


Figure 10: DO level at Surface and Mid-depth (mean + SD) at Downstream (DS1, DS2, DS3, DS4 and DS5), Upstream (US1 and US2) and Ma Wan (MW1) stations during Impact Monitoring for Dredging at CMP V on 6 August 2010.



**Figure 11:** Depth-average Turbidity (mean + SD) at Downstream (DS1, DS2, DS3, DS4 and DS5), Upstream (US1 and US2) and Ma Wan (MW1) stations during Impact Monitoring for Dredging at CMP V on 6 August 2010.



**Figure 12:** Depth-average TSS (mean + SD) at Downstream (DS1, DS2, DS3, DS4 and DS5), Upstream (US1 and US2) and Ma Wan (MW1) stations during Impact Monitoring for Dredging at CMP V on 6 August 2010.

**Table B1**      *Summary Table of DO, Turbidity and TSS Levels recorded in July and August 2010*

Sampling Date	Tidal Period	Station	Average DO Levels (mg/L)		Average Turbidity Level (NTU)	Average TSS Level (mg/L)
			Bottom	Surface and Mid Depth		
2010/08/02	ME	DS1	5.03	6.60	7.26	7.67
		DS2	5.03	7.20	7.68	9.00
		DS3	3.83	6.16	10.54	10.33
		DS4	4.11	6.42	9.75	11.50
		DS5	4.84	7.92	6.35	7.33
		MW1	4.16	10.52	4.43	6.83
		US1	4.84	6.62	8.48	9.33
		US2	5.14	7.16	5.62	5.17
	MF	DS1	4.89	6.97	10.45	15.33
		DS2	4.75	6.72	8.18	9.83
		DS3	4.71	6.64	6.40	6.83
		DS4	4.80	6.61	4.88	5.83
		DS5	5.22	6.66	4.58	5.33
		MW1	3.54	5.56	5.91	4.67
		US1	4.72	7.24	9.04	12.67
		US2	4.95	6.37	8.37	11.00
2010/08/04	ME	DS1	3.19	5.09	9.78	12.67
		DS2	5.64	7.24	5.24	7.83
		DS3	3.00	5.30	10.52	13.00
		DS4	3.42	5.62	8.69	10.33
		DS5	3.49	7.18	8.17	10.50
		MW1	3.54	8.08	4.90	8.00
		US1	3.19	5.37	7.01	9.17
		US2	3.55	5.40	6.25	7.17
	MF	DS1	4.61	8.76	54.19	67.67
		DS2	4.90	8.30	7.49	9.33
		DS3	4.35	8.76	5.86	8.50
		DS4	6.41	7.93	5.15	8.83
		DS5	6.80	10.83	6.31	10.33
		MW1	3.39	7.88	6.58	11.00
		US1	5.93	10.87	12.22	23.00
		US2	5.47	10.56	7.44	12.00
2010/08/06	ME	DS1	3.35	4.85	5.76	10.33
		DS2	2.68	4.84	7.43	10.67
		DS3	2.64	4.55	9.97	14.50
		DS4	2.76	4.90	7.63	11.50
		DS5	2.93	4.96	5.02	8.17
		MW1	2.56	6.52	2.85	7.17
		US1	2.93	5.35	4.98	6.83
		US2	2.99	5.75	4.68	7.67
	MF	DS1	5.05	8.73	9.98	16.33
		DS2	3.90	8.23	8.52	11.17
		DS3	4.57	7.62	7.96	10.33
		DS4	3.93	8.72	5.88	8.50
		DS5	3.74	7.88	6.10	9.67
		MW1	2.97	3.94	3.10	6.67
		US1	5.25	9.21	5.09	8.67
		US2	3.93	7.83	6.36	10.33

Notes:

1. Cell shaded yellow indicates value exceeding the Action Level.
2. Cell shaded red indicates value exceeding the Limit Level.